

## GW304-LF Large Flange Threaded Insert

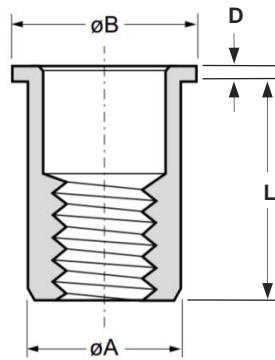
Stainless steel 304 · Large flange · Round · Open end  
M4 - M12

### Features

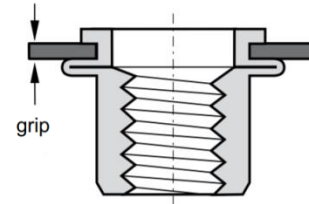
- Designed to provide load bearing threads in thin sheet materials
- Large flange head provides a load bearing surface and reinforces the hole to prevent push-out

### Material

- Stainless steel 304



Before Placement



After Placement

Part No.	Thread Size	Grip Range		Hole Size	$\phi A$	$\phi B$	D	L
		min.	max.					
GW304-LFM4-0520	M4	0.5	2.0	6.0	6.0	9.0	1.0	11.0
GW304-LFM4-2035		2.0	3.5					12.5
GW304-LFM5-0530	M5	0.5	3.0	7.0	7.0	10.0	1.0	11.5
GW304-LFM5-3050		3.0	5.0					15.0
GW304-LFM6-0530	M6	0.5	3.0	9.0	9.0	12.0	1.5	14.5
GW304-LFM6-3050		3.0	5.0					16.5
GW304-LFM6-5070		5.0	7.0					18.5
GW304-LFM8-0530	M8	0.5	3.0	11.0	11.0	15.0	1.5	16.0
GW304-LFM8-3055		3.0	5.5					18.5
GW304-LFM8-5580		5.5	8.0					21.5
GW304-LFM10-0830	M10	0.8	3.0	12.1	12.0	15.0	1.0	18.5
GW304-LFM10-3050		3.0	5.0					20.5
GW304-LFM10-0835		0.8	3.5	13.0	13.0	17.0	1.5	21.5
GW304-LFM10-3560		3.5	6.0					24.0
GW304-LFM10-6085		6.0	8.5					26.5
GW304-LFM12-1040	M12	1.0	4.0	16.0	16.0	23.0	2.0	25.0
GW304-LFM12-3070		3.0	7.0					28.0

Thread Size	Max. torque	Pull-out	Torque-to-turn	Shear strength
	Nm max.	Kn	Nm	kN
M4	~7.1	> ~11.0	~2.6	~3.5
M5	> ~16.0	> ~14.5	~3.0	~4.8
M6	> ~22.0	> ~27.0	~6.8	~7.3
M8	> ~70.0	> ~40.0	~9.0	~9.0
M10	> ~70.0	> ~43.0	~13.0	~8.4
M12	> ~130.0	> ~70.0	~25.0	~14.0